

Dudley Infant Academy Outcomes (2017/2018 Academic Year)



Headlines - End of Key Stage data for 2018 (includes previous year comparison)

At Expected Standard

KS1 all pupils				
	DIA 2017	2017 Nat.	DIA 2018	2018 Nat.
Reading	61%	76%	78%	76%
Writing	39%	68%	75%	70%
Mathematics	54%	75%	78%	76%
Combined	36%	63%	72%	68%

KS1 disadvantaged (PP) pupils				
	DIA 2017	2017 Nat other.	DIA 2018	2018 Nat.
Reading	46%	79%	60%	63%
Writing	36%	72%	60%	55%
Mathematics	36%	79%	67%	63%
Combined	9%	70%	60%	50%

Greater Depth Standard

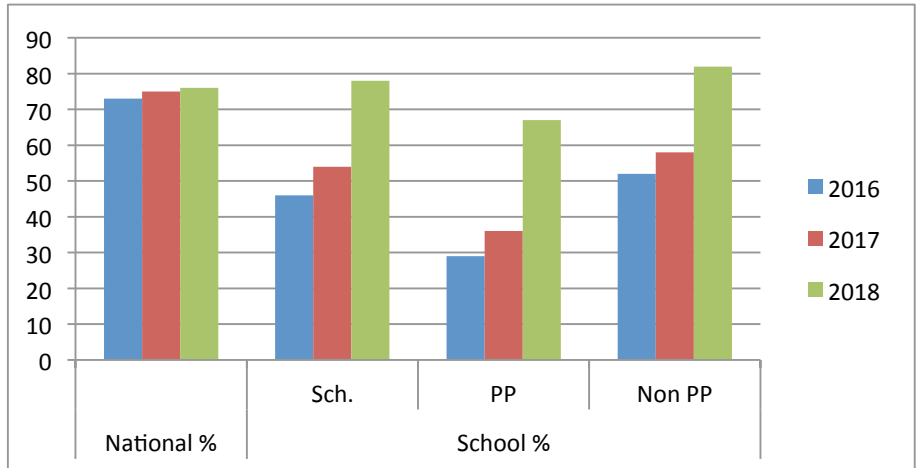
KS1 all pupils				
	DIA 2017	2017 Nat.	DIA 2018	2018 Nat.
Reading	17%	25%	30%	26%
Writing	7%	16%	23%	16%
Mathematics	5%	21%	30%	22%
Combined	2%	11%	23%	12%

KS1 disadvantaged (PP) pupils				
	DIA 2017	2017 Nat other.	DIA 2018	2018 Nat.
Reading	9%	28%	7%	14%
Writing	9%	18%	7%	8%
Mathematics	0%	23%	13%	12%
Combined	0%	21%	7%	5%

KS1 Mathematics Attainment 2018

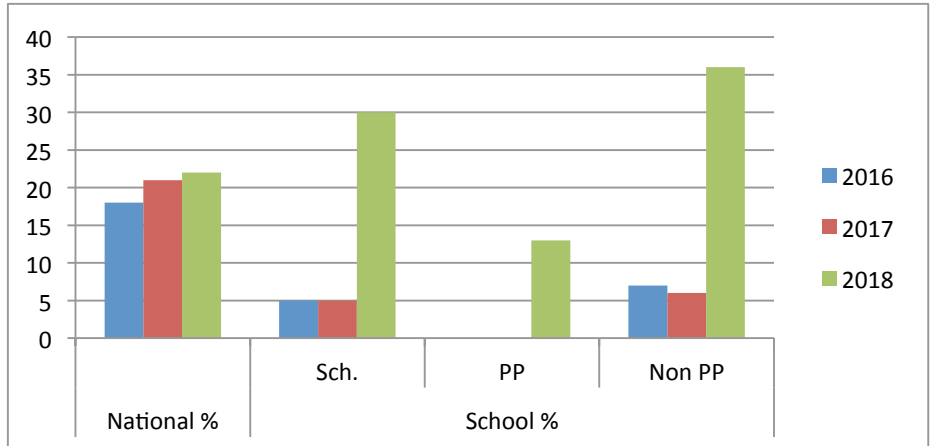
Percentage at the Expected Standard

	National	School %		
	%	Sch.	PP	Non PP
2016	73	46	29	52
2017	75	54	36	58
2018	76	78	67	82



Percentage at Greater Depth

	National	School %		
	%	Sch.	PP	Non PP
2016	18	5	0	7
2017	21	5	0	6
2018	22	30	13	36

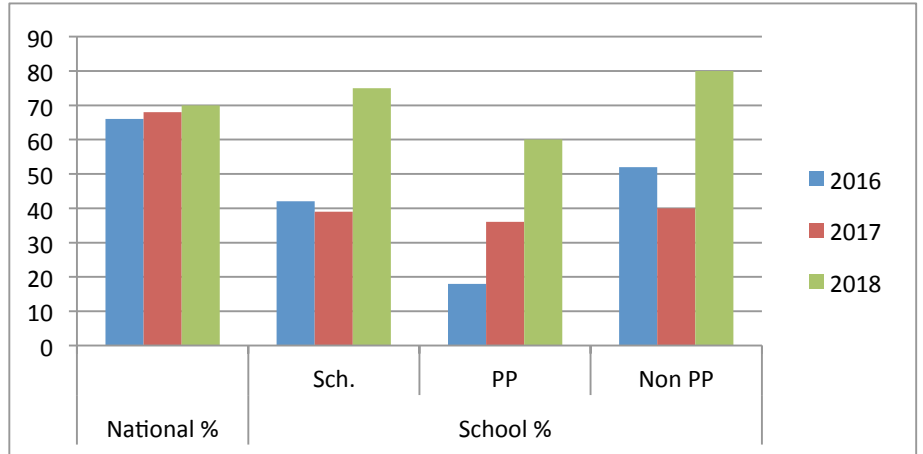


N.B. PP - the cohort of children who have been entitled to Free School Meal (FSM) in the last 6 years

KS1 Writing Attainment 2018

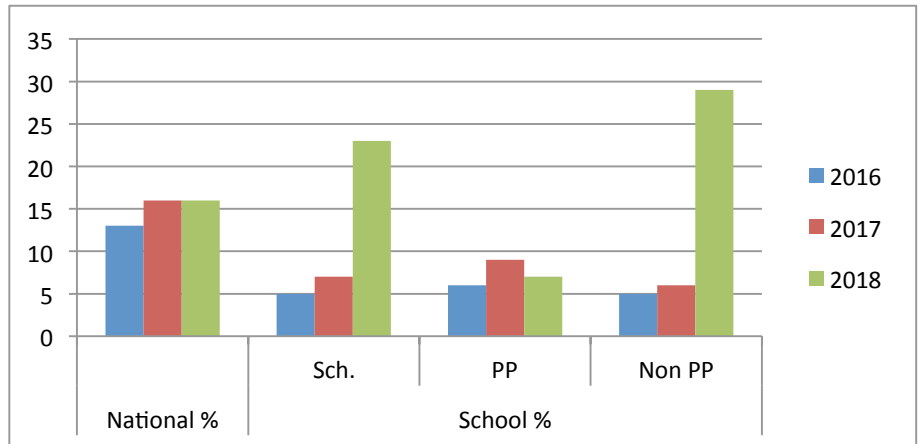
Percentage at the Expected Standard

	National	School %		
	%	Sch.	PP	Non PP
2016	66	42	18	52
2017	68	39	36	40
2018	70	75	60	80



Percentage at Greater Depth

	National	School %		
	%	Sch.	PP	Non PP
2016	13	5	6	5
2017	16	7	9	6
2018	16	23	7	29

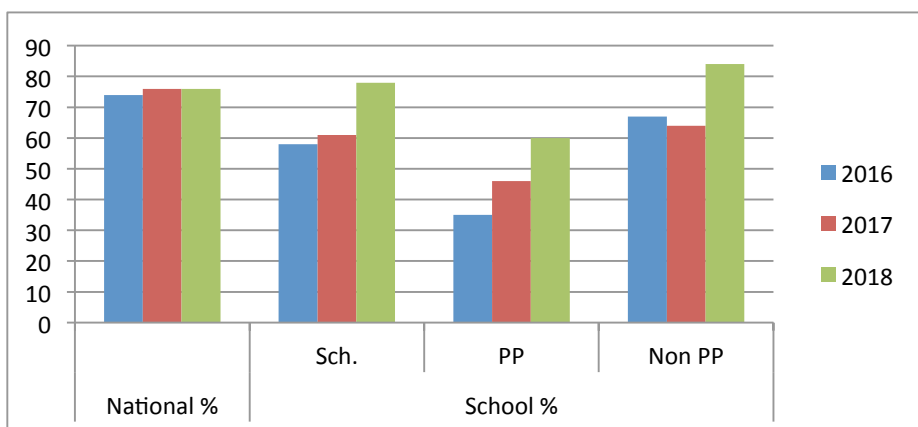


N.B. PP - the cohort of children who have been entitled to Free School Meal (FSM) in the last 6 years

KS1 Reading attainment 2018

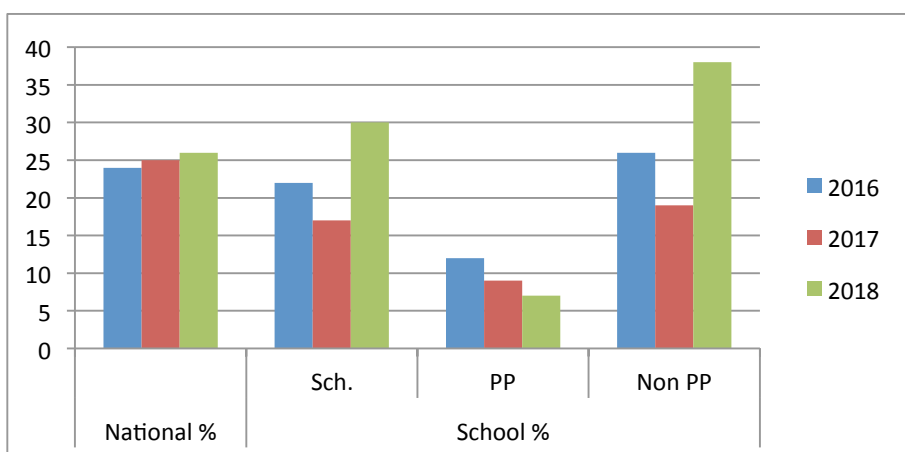
Percentage at the Expected Standard

	National	School %		
	%	Sch.	PP	Non PP
2016	74	58	35	67
2017	76	61	46	64
2018	76	78	60	84



Percentage at Greater Depth

	National	School %		
	%	Sch.	PP	Non PP
2016	24	22	12	26
2017	25	17	9	19
2018	26	30	7	38

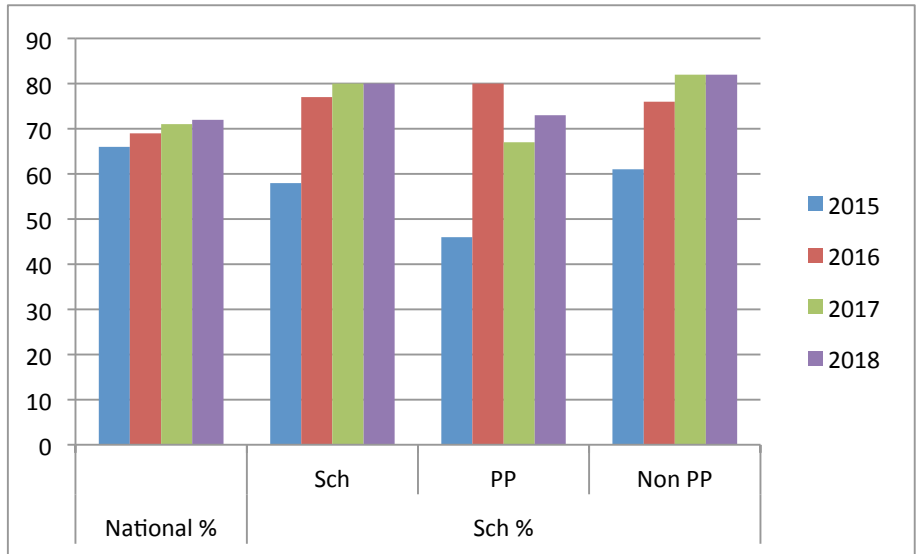


N.B. PP - the cohort of children who have been entitled to Free School Meal (FSM) in the last 6 years

EYFS GLD and Y1 and Y2 Phonics 2018

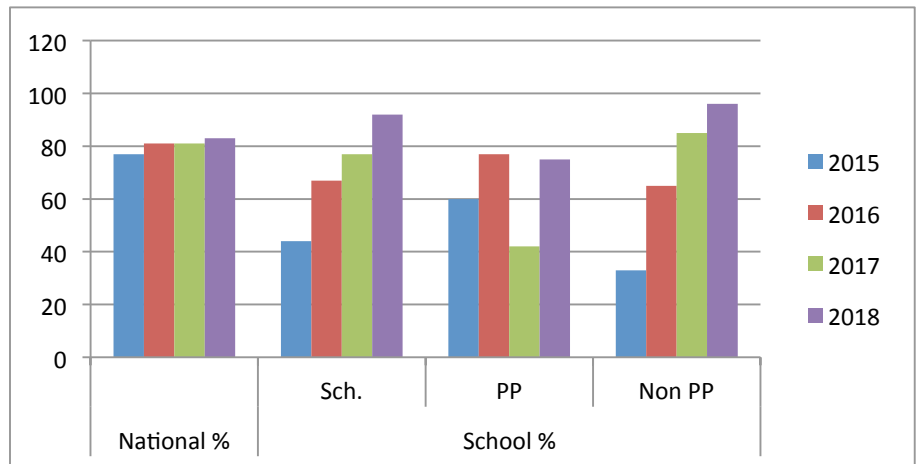
Good level of Development (End Year R)

	National	Sch %		
	%	Sch	PP	Non PP
2015	66	58	46	61
2016	69	77	80	76
2017	71	80	67	82
2018	72	80	73	82



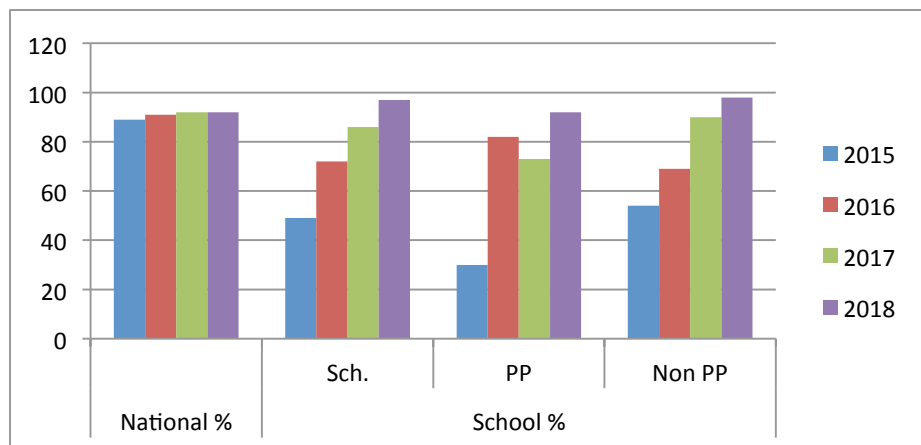
Phonics Y1

	National	School %		
	%	Sch.	PP	Non PP
2015	77	44	60	33
2016	81	67	77	65
2017	81	77	42	85
2018	83	92	75	96



Phonics Y2

	National	School %		
	%	Sch.	PP	Non PP
2015	89	49	30	54
2016	91	72	82	69
2017	92	86	73	90
2018	92	97	92	98



N.B. PP - the cohort of children who have been entitled to Free School Meal (FSM) in the last 6 years